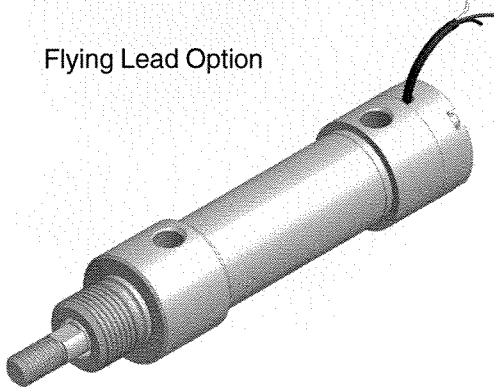


Series SRX – Stainless Steel Body Air Cylinders with Position Feedback

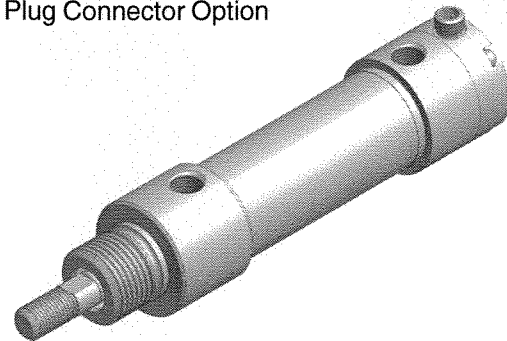
The Series SRX Linear Resistive Transducer (LRT) is a position sensor that uses a resistive element, and wiper assembly, to provide a continuous analog output signal relative to the cylinders position. The LRT is a dual element type linear potentiometer with two independent elements mounted on either side of an anodized aluminum extrusion. The LRT operates as a voltage divider by creating a short between the wiper extrusion and the wiper assembly. The position of the wiper changes the resistive load proportionally to its position along the stroke length of the cylinder.

Supplying a 5 to 24 VDC voltage energizes the LRT. As the cylinder travels through its range of stroke, the resistive load changes, thus causing a proportional voltage output change of the LRT. The output voltage, at the endpoint of cylinder stroke, is dictated by the input voltage applied across the device.

Flying Lead Option



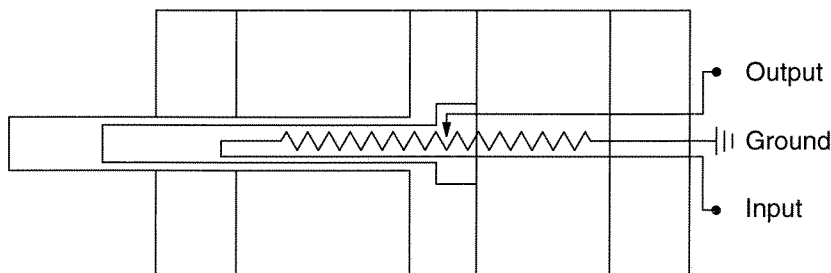
Plug Connector Option



LRT Specifications

- | | |
|----------------------------------|---|
| ➤ Repeatability | .001" (interface electronics dependent) |
| ➤ Non-Linearity | 1% of full stroke (18" max stroke) |
| ➤ Resolution | Infinite |
| ➤ Signal Input | 5 to 24 VDC |
| ➤ Signal Output (w/o controller) | DC ratiometric voltage * |
| ➤ Signal Output (w/ controller) | 0 to 10 VDC or 4 to 20 mA |
| ➤ Maximum Speed | 50" per second |
| ➤ Rated Life of LRT | 50 Million inches of wiper travel |
| ➤ Pressure Rating | 150 psi |
| ➤ Temperature Rating | +40°F to +165°F |
| ➤ Resistance Rating | 1,000 Ohms per inch ± 20% |
| ➤ LRT Installation Options | 6" Flying Leads or 3-pin nano connector |

* 1 Mega Ohm impedance interface device suggested for limiting sensor current if the controller is not used.



Function	6" Leads	Plug Connector
Input	Red	Brown
Ground	Black	Blue
Output	White	Black

WARNING

FAILURE OR IMPROPER SELECTION OR IMPROPER USE OF THE PRODUCTS AND/OR SYSTEMS DESCRIBED HEREIN OR RELATED ITEMS CAN CAUSE DEATH, PERSONAL INJURY AND PROPERTY DAMAGE.

This document and other information from the Company, its subsidiaries and authorized distributors provide product and/or system options for further investigation by users having expertise. It is important that you analyze all aspects of your application, including consequences of failure and review the information concerning the product or system in the correct product catalog. Due to the variety of operating conditions and applications for these products or systems, the user, through its own analysis and testing, is solely responsible for making the final selection of the products and systems and assuring that all performance, safety and warning requirements of the application are met. The products described herein, including without limitation, product features, specifications, design, availability and pricing are subject to change by the Company and its related companies at any time without notice.